

Abachus

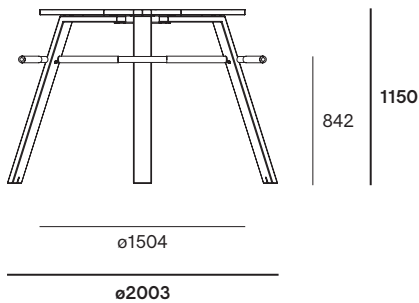
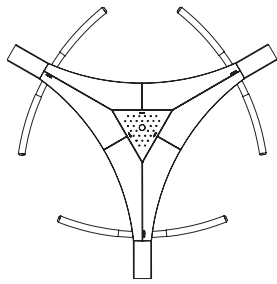
© design by Dirk Wynants

extremis®



Dimensions

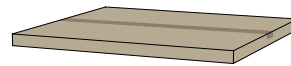
The Abachus is available in one dimension



Box dimensions

The Abachus comes in 4 boxes

Box 1: Tabletop



Box 2: Legs



Box 3: Connection pieces
+ mounting kit



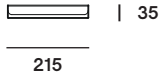
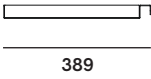
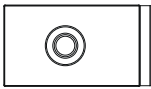
Box 4: Seating protection tubes



Box dimensions (mm)		L	W	H	Qty	Volume (m ³)	Gross weight (kg)	Net weight (kg)	Packaging weight (kg)
Abachus	Box 1	1380	1230	70	1	0,12	24,00	20,20	3,80
	Box 2	1460	130	130	1	0,02	33,60	33,00	0,60
	Box 3	435	390	70	1	0,02	6,40	5,90	0,50
	Box 4	1150	210	150	1	0,04	8,00	7,50	0,50
Total:						0,20	72,00	66,60	5,40

Ashtray

The ashtray is available in one dimension
The ashtray has a capacity of 2 liter



Ashtray box

The ashtray comes in 1 box

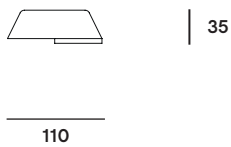
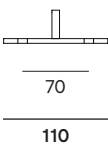
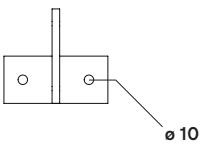
Box 5: ashtray



Box dimensions (mm)		L	W	H	Qty	Volume (m3)	Gross weight (kg)	Net weight (kg)	Packaging weight (kg)
Ashtray	Box 5	335	335	80	1	0,01	1,70	1,40	0,30

Floor fastening

The floor fastening is available in one dimension



Floor fastening box

The floor fastening comes in 1 box

Box 6: floor fastening



Box dimensions (mm)		L	W	H	Qty	Volume (m3)	Gross weight (kg)	Net weight (kg)	Packaging weight (kg)
Floor fastening	Box 6	200	140	140	1	0,01	1,29	1,19	0,10

Materials & colors

Check price list or www.extremis.com for current materials & colors

Tabletop



Iroko hardwood

Tabletop centreplate




Stainless steel 316

Frame & legs



Galvanized steel



Materials	Key facts	Thickness mm	Layer thickness micron	Density	In/outdoor	Water	UV color fastness	Flame retarding
Iroko tabletop & benches	<ul style="list-style-type: none"> Durability CLASS 1 Feels comfortable in all weather conditions Advisable to oil the wood 	30	n.a.	600 à 700 kg/m ³	Outdoor & indoor	n.a.	Untreated wood turns grey after a while	/
Iroko tabletop & benches	 <ul style="list-style-type: none"> Durability CLASS 1 Carries the FSC® label for durable forestry Feels comfortable in all weather conditions Advisable to oil the wood 	30	n.a.	600 à 700 kg/m ³	Outdoor & indoor	n.a.	Untreated wood turns grey after a while	/
Hot dip galvanized steel frame & legs	<ul style="list-style-type: none"> Most durable method for protecting metal from rusting Protective layer Very long life span 100% recyclable Cradle to Cradle Certified™ 	2	50 - 100	7,50 10 ³ kg/m ³	Outdoor & indoor	n.a.	Very good, galvanization will however become less shiny when used outdoors	NEN-EN13501-1 A1 *
Stainless steel tabletop centreplate AISI 316	<ul style="list-style-type: none"> High rust resistance Periodical maintenance required 	1,50	n.a.	8,00 10 ³ kg/m ³	Outdoor & indoor	n.a.	Very good	NEN-EN13501-1 A1 *
PVC protection tubes	<ul style="list-style-type: none"> Very strong and comfortable to lean on Will not stain on clothing Dip moulding 	2	n.a.	1,16 10 ³ kg/m ³	Outdoor & indoor	n.a.	Very good	/

NEN-EN13501-1 A1 Class A1 products will not contribute to fire in any stage, including fully developed fire. For this reason, they are assumed to be capable of satisfying all requirements of all lower classes as well.

Good to know

- Minimum space needed for legs: ø2003 mm.
- The hole in the tabletop to place a parasol in is ø35 mm.
- Ashtray = 2 liter
- If you purchase an Abachus without ashtray, it is not possible to mount an ashtray on afterwards.
- The specific shape of the tabletop serves as an armrest.
- Abachus combines perfectly with Inumbrina small, no parasol foot needed.



F.A.Q.

Q: *Do you need to oil the wood?*

A: Just like other types of wood, wood will gradually become rougher and start to turn grey as a consequence of exposure to the sun and rain. Small cracks and crevices can also appear as part of this process. We strongly advise everyone to treat the furniture with our Wood Protector. This 100% natural oil controls the moisture level within the wood, which makes the planks stay stable for longer, and the layer of oil also helps to prevent spilled liquids from being absorbed, so that stains tend to stay superficial. It is best to repeat this treatment at regular intervals.

Maintenance

GALVANIZED PARTS

- Clean with lukewarm water and a mild detergent or Extremis multi cleaner.

WOOD

- Clean regularly with mild detergent.
- Thorough cleaning with Extremis Wood Cleaner.
- Oil the wood with Extremis Wood Protector. We recommend oiling the wood at regular intervals depending from location and general weather conditions.
- In order to smoothen the surface again after a thorough cleaning, lightly sand your wood with 80 grit sanding paper or a sanding pad.

STAINLESS STEEL

- Clean regularly with a dry cloth and some stainless steel cleaner

RECOMMENDED USE

- For Extremis Wood protector:



8 to 12 wood care treatments



4 to 6 wood care treatments



80 - 120 ml for one Abachus

Floor fastening

Abachus has an optional floor fastening set, three galvanized steel plates to be fixed with bolts.



Fun fact

We have provided little hooks underneath the tabletop to hang purses, bags, etc.



Warnings

General

- Do not use any sharp tools to open the packaging.
- We strongly advise against using power tools.
- Tripping hazard, mind your step.
- Do not put out cigarettes on the table.
- Not graffiti proof.
- Do not leave children unattended whilst playing on the table.
- To avoid danger of suffocation, keep plastic bags away from babies and children.
- Colors can differ over years and from batch to batch.

Product

- Do not stand or jump on the table.
- Do not drag the table, but carry it with minimum 2 people.
- Anchoring the product has to be done by qualified people.
- For anchoring: use suitable bolts or screws from a specialized store depending on the material your terrace is made of.
- Do not sit or stand on the arms, only to lean against, not to hang.
- The table is not a climbing frame.
- Make sure all the cigarette butts have been extinguished when you leave the Abachus unattended.
- We strongly advise you to empty the optional

ashtrays regularly to avoid leaving marks on the ground.

- Do not empty the optional ashtrays until all the ashes have been extinguished!
- The optional ashtray is only intended for cigarettes. Never use it for paper or other trash.
- The rope of an Inumbrina parasol must never come into contact with the ashtray.
- Max. 3 people or 240 kg per armrest

Wood

- When delivered, the wood is untreated.
- Wood is a natural material and its look is different for every slat, plank and tree.
- Wood will gradually become rougher and start to turn grey as a consequence of exposure to the sun and rain. We recommend oiling the wood at regular intervals depending from location and general weather conditions.
- Clean regularly with mild detergent. Never use a high pressure cleaner as this will roughen the wood's smooth surface and irreparably damage the wood's fiber.
- Thorough cleaning with Extremis Wood Cleaner.
- We strongly recommend that you treat your wood with wood protector to protect it from stains - small cracks and crevices can also appear as part of this process. We strongly advise everyone to treat the furniture with our Wood Protector.

Galvanized steel

- Galvanization will become less shiny when used outdoors.
- Flame retarding - NEN-EN13501-1 A1 - Class A1 products will not contribute to fire in any stage, including fully developed fire. For this reason, they are assumed to be capable of satisfying all requirements of all lower classes as well.
- Possible impurities in the immersion tank can cause black marks during galvanization, which are intrinsic to this industrial finishing technique.
- White marks on this zinc layer are also intrinsic to this procedure and will disappear when the furniture is put outdoors.
- This industrial finishing technique may result in a rougher surface. This is intrinsic to the process.

Stainless steel

- Very good UV color fastness.
- Flame retarding: NEN-EN13501-1 A1 - Class A1 products will not contribute to fire in any stage, including fully developed fire. For this reason, they are assumed to be capable of satisfying all requirements of all lower classes as well.
- Watch out, stainless steel isn't entirely rustproof! Be sure to avoid contact with iron objects. If it does show signs of rust, clean with rust remover as quickly as possible.